

E300

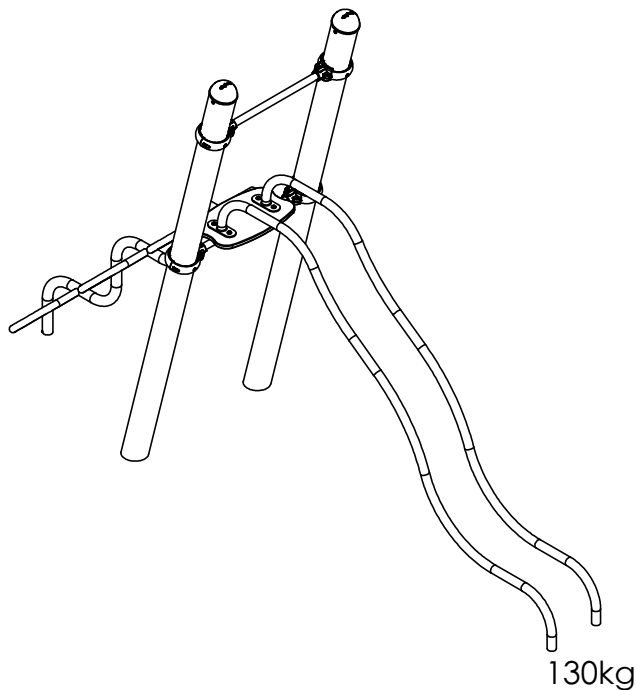
Pioneer

Montagehandleiding
Notice de montage
Assembling manual
Montageanleitung
Instrucciones para el montaje
Istruzioni di installazione

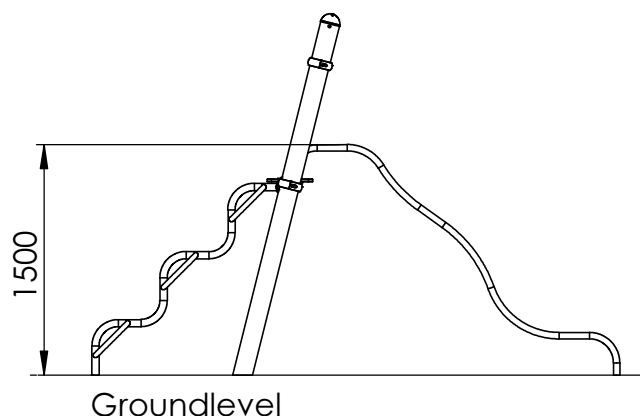
Leeftijd
Age group
Age / Alter
Edad / Età
6 - 12

EUROPLAY nv
Eegene 9
B-9200 DENDERMONDE
tel. 32.52.22 66 22
fax.32.52.22 67 22
www.europlay.eu

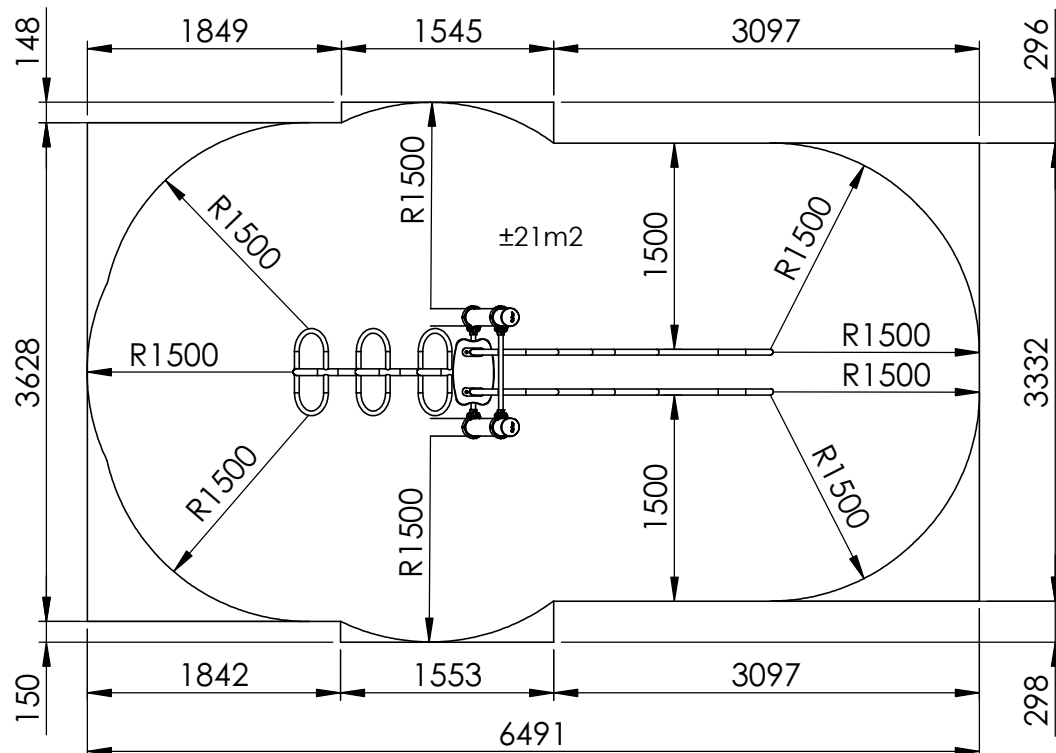
Dat.: 6/04/2021
Rev.: -
Page: 1/4



VALHOOGTE / HAUTEUR DE CHUTE /
FALL HEIGHT / FALLHÖHE/
ALTURA DE CAÍDA / ALTEZZA DI CADUTA



VEILIGHEIDSAFSTAND / ESPACE DE CHUTE / SAFETY AREA /
SICHERHEITSAFSTAND / ZONA DE SEGURIDAD / DISTANZA DI SICUREZZA

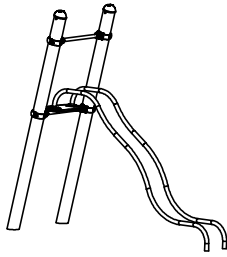
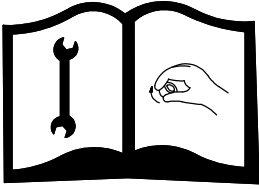


AFMETINGEN
DIMENSIONS
MASSE
DIMENSIONES
DIMENSIONI
L: 3,5m
Br: 1m
H: 2,4m

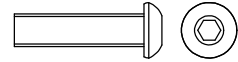
±23,5m²

Benodigdheden - Liste des pièces - Materials - Benötigtes - Accesorios - Requisiti

1x E070



2x M10x30



2x M10



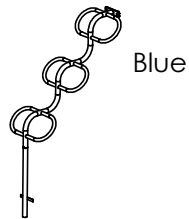
2x M10



2x White



1x L640-M-SlangLad-01

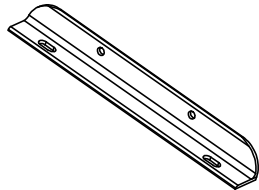


Blue

3633,7 x 2721,8 x 2053

18.86kg

1x E000-M-AanslLat-01

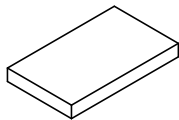


Red

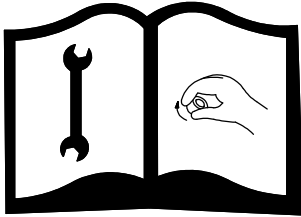
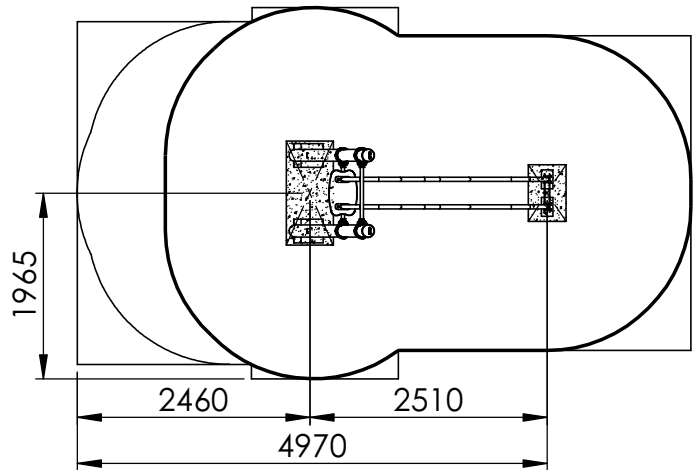
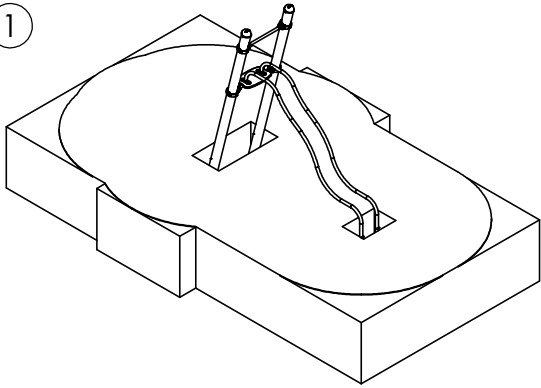
400 x 45 x 45

1.29kg

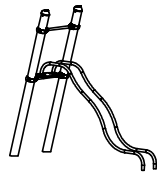
1x Lb-H-Steunblok-01



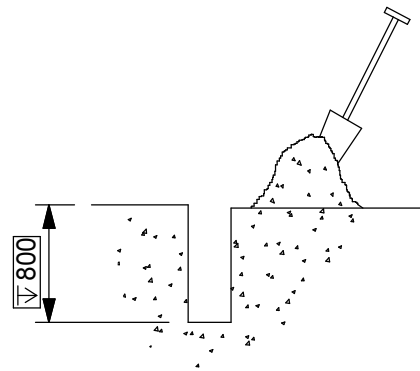
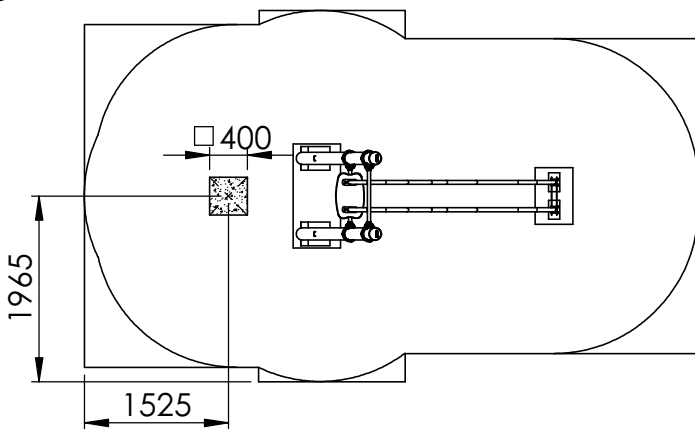
①



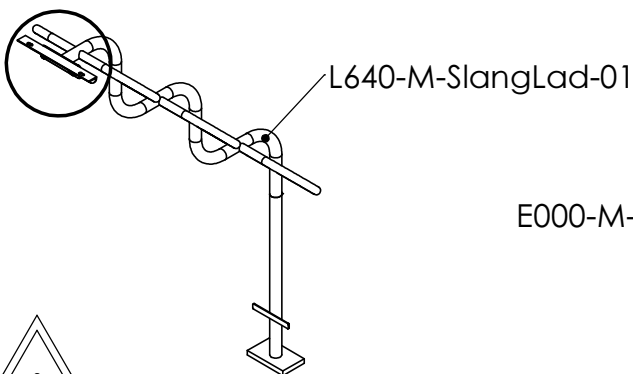
E070



②

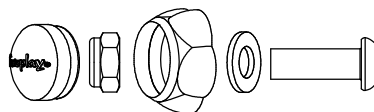
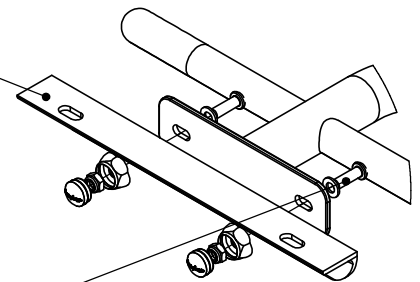


③

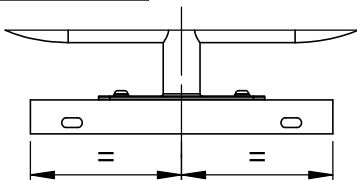
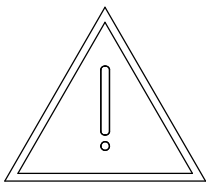


L640-M-SlangLad-01

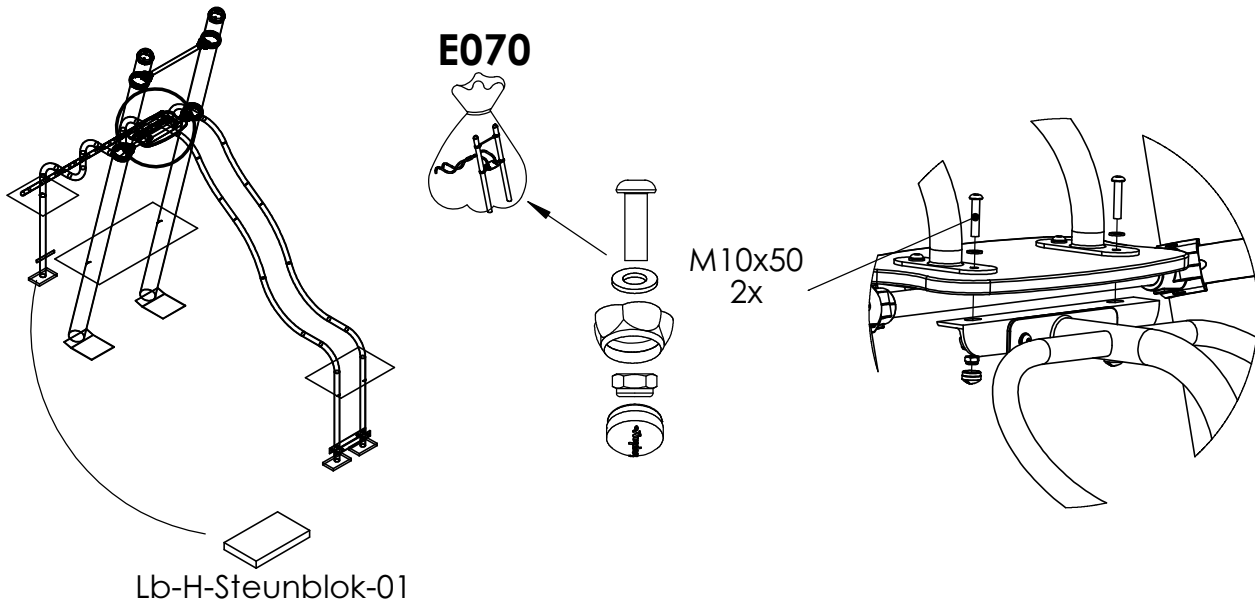
E000-M-AansLat-01



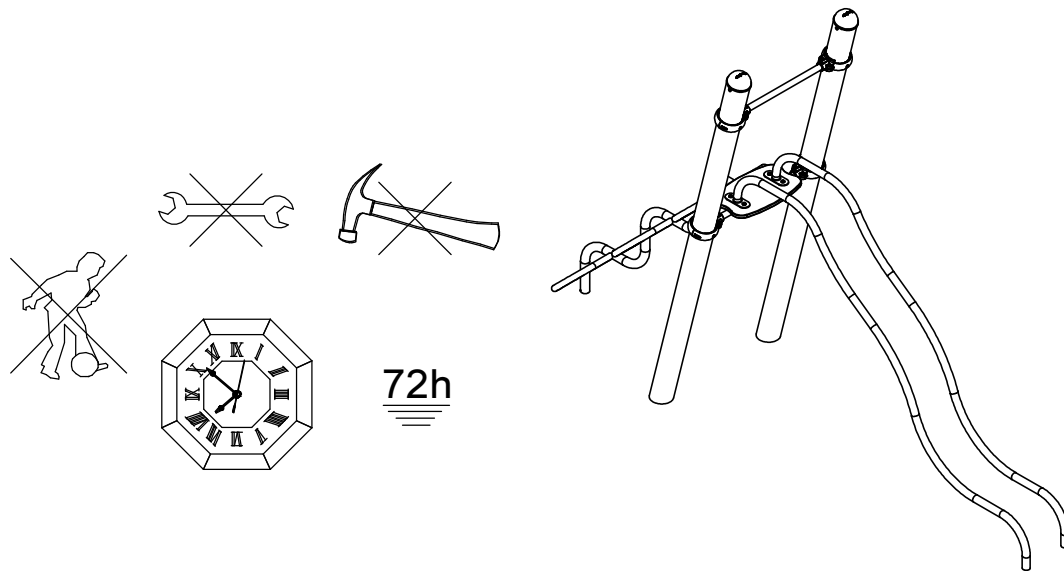
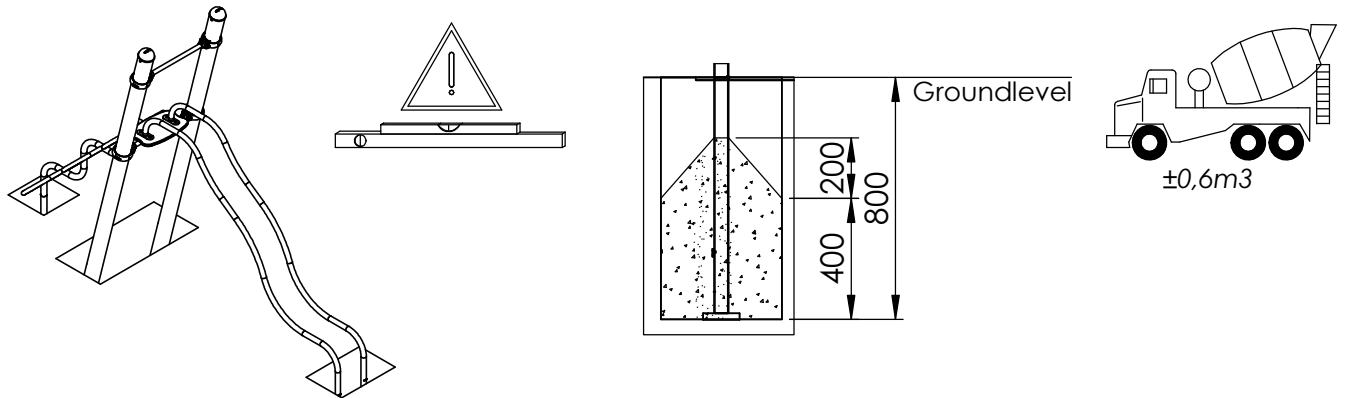
M10x30
2x



4



5



6

Bij droog weer moeten alle bouten en schroeven opnieuw aangespannen worden.
 Par temps sec il faut resserrer régulièrement toute la visserie.
 By dry and warm weather check the tightness of all bolts and screws.
 Bei trockenem Wetter müssen alle Schrauben und Bolzen aufs neue angespannt werden.
 Para el tiempo seco, se necesita cerrar o ajustar los tornillos y tuercas.
 Con tempo asciutto, tutti i bulloni e le viti devono essere avvitati nuovamente.